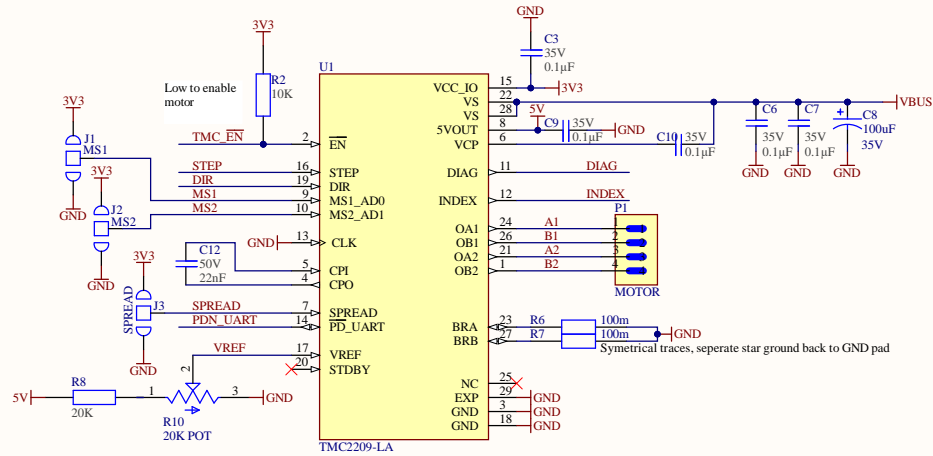
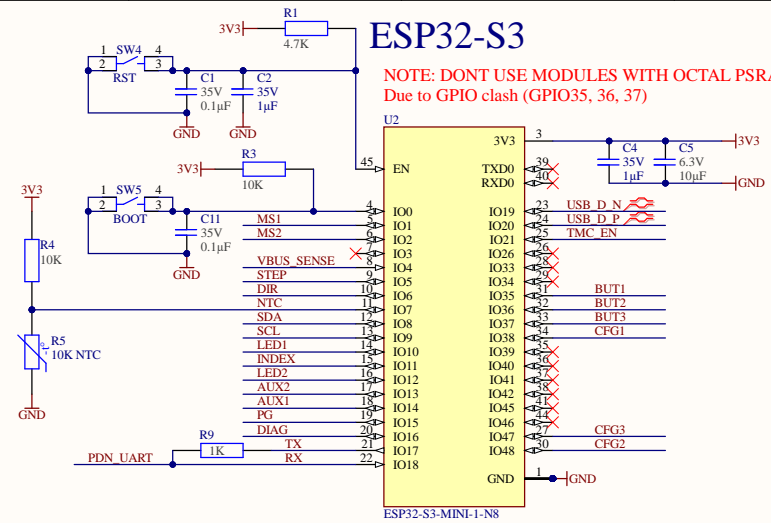


STEPPER DRIVER

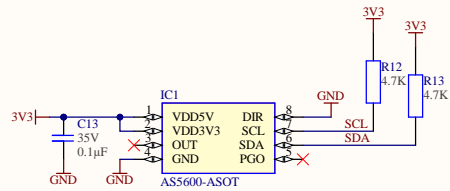


ESP32-S3

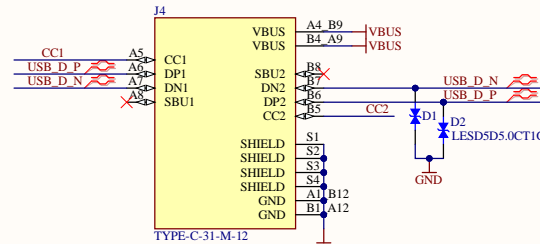
NOTE: DONT USE MODULES WITH OCTAL PSRAM
Due to GPIO clash (GPIO35, 36, 37)



HALL SENSOR



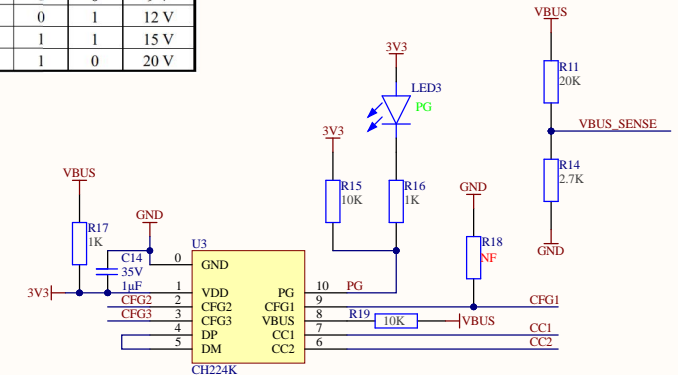
USB C



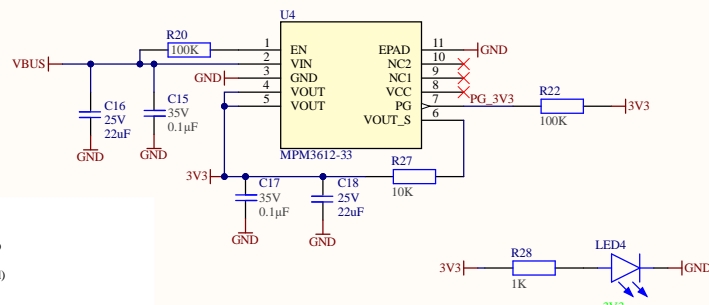
USB PD

Voltage table, will be 20V if all high-Z

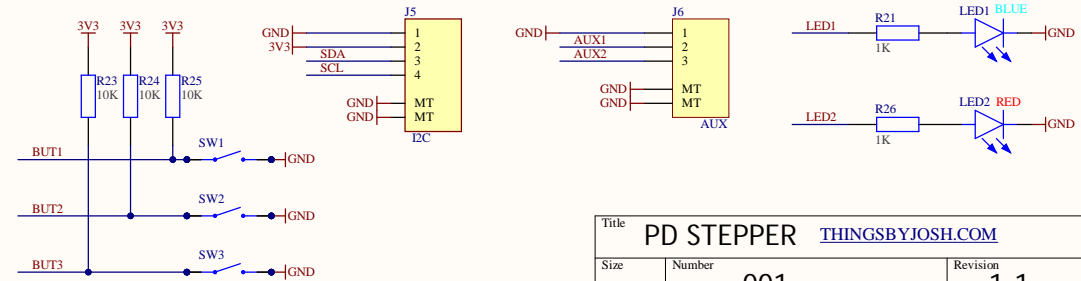
CFG1	CFG2	CFG3	Request-voltage
1	-	-	5 V
0	0	0	9 V
0	0	1	12 V
0	1	1	15 V
0	1	0	20 V



3V3 CONVERTER



IO



REV Notes

- REV 1.1 Changes:
- Connected TMC CLK Pin to GND
- LED Colour Change
- LED Series RES Change (Dimmed)
- MPM3612 Footprint updated

Title			PD STEPPER	THINGSBYJOSH.COM
Size	Number	Revision		
A3	001	1.1		
Date:	10/11/2024	Sheet 1 of 1		
File:	C:\Users\Josh\PD Stepper V1.SchDoc	Drawn By: Josh R		